



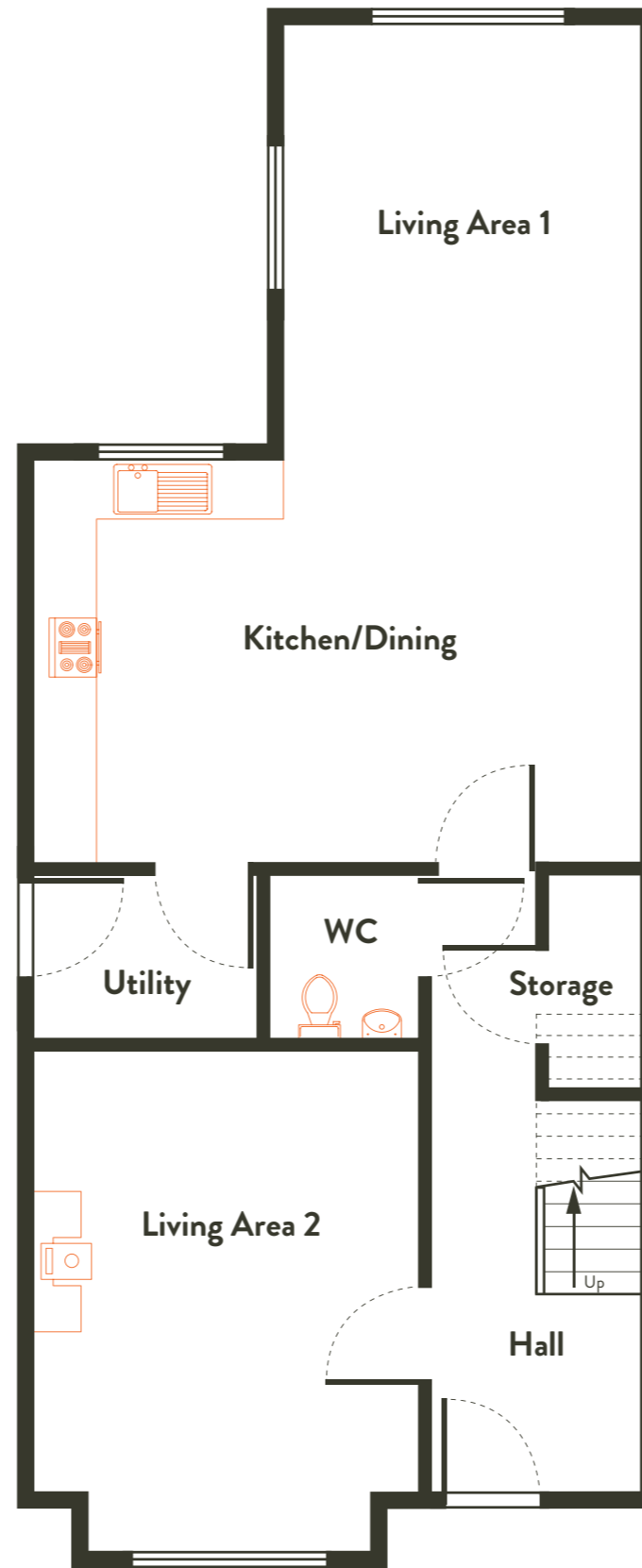
House Type B1

4 Bed Semi-Detached Left Hand - Ground Floor

Overall 138.23 sq.m - 1488 sq.ft approx.



For more information
contact Selling Agents:
T: + 353 (0) 21 427 4323,
E: info@bartherswood.com
W: www.bartherswood.com



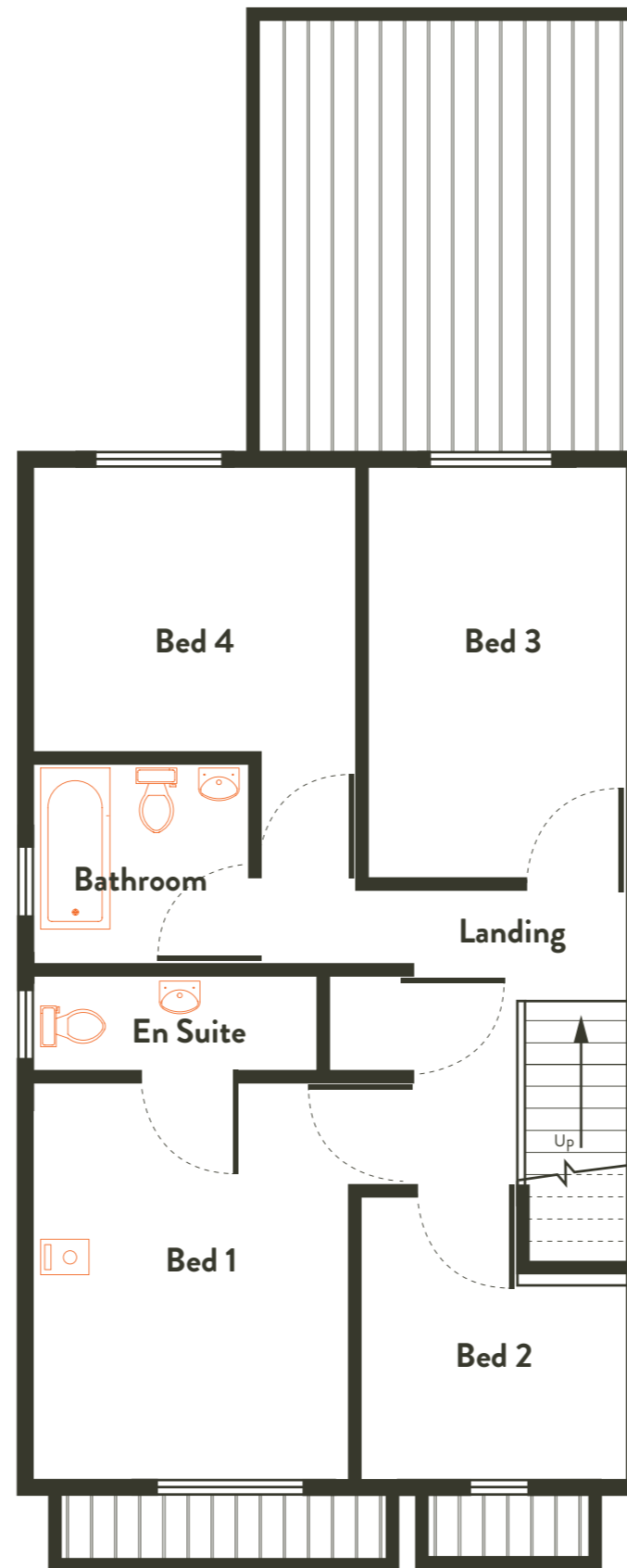
Ground Floor Plan		
Room	Measurements (approx)	
	Metric	Imperial
Kitchen / Dining	5.95 x 3.99 m	19.52 x 13.09 ft
Living Area 1	3.42 x 4.44 m	11.22 x 14.57 ft
Living Area 2	3.77 x 4.93 m	12.37 x 16.17 ft
Utility	2.14 x 1.64 m	7.02 x 5.38 ft
WC	1.55 x 1.64 m	5.09 x 5.38 ft



House Type B1

4 Bed Semi-Detached Left Hand - First Floor

Overall 138.23 sq.m - 1488 sq.ft approx.



First Floor Plan		
Room	Measurements (approx)	
	Metric	Imperial
Bed 1	3.09 x 3.96 m	10.14 x 12.99 ft
Bed 2	2.74 x 2.76 m	8.99 x 9.06 ft
Bed 3	2.66 x 4.10 m	8.73 x 13.45 ft
Bed 4	3.18 x 3.85 m	10.43 x 12.63 ft



For more information
contact Selling Agents:
T: + 353 (0) 21 427 4323,
E: info@bartherswood.com
W: www.bartherswood.com