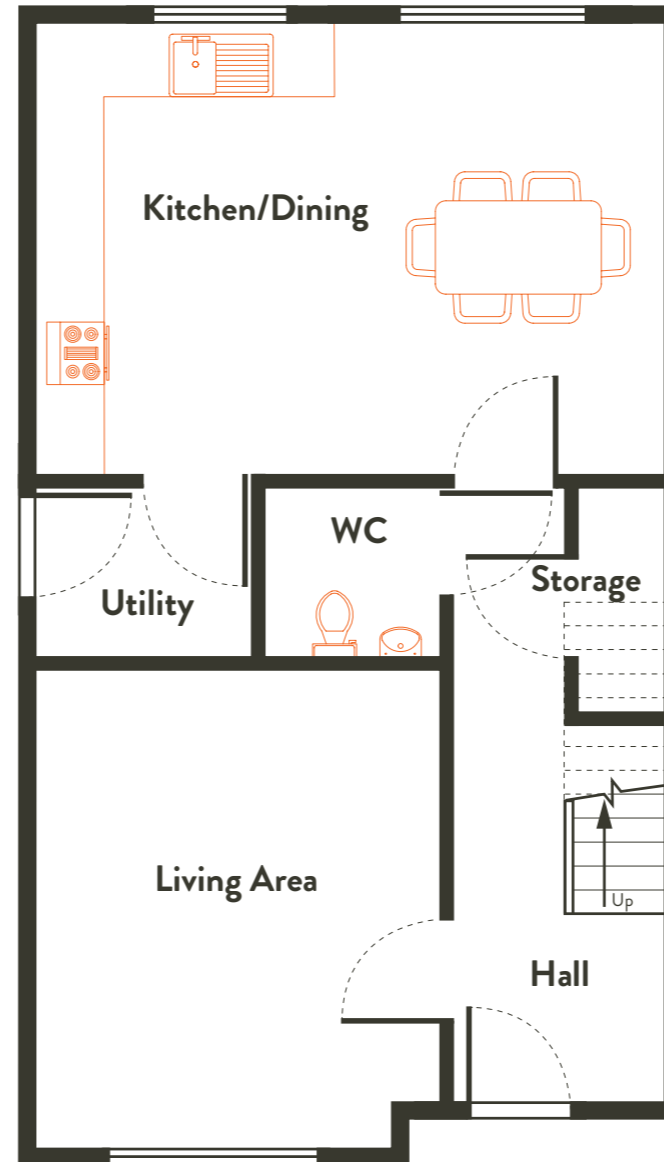




## House Type C1

### 3 Bed Semi-Detached Left Hand - Ground Floor

Overall 117.6 sq.m - 1266 sq.ft approx.



Ground Floor Plan		
Room	Measurements (approx)	
	Metric	Imperial
Kitchen / Dining	5.80 x 4.21 m	19.03 x 13.81 ft
Living Area	3.73 x 4.42 m	12.24 x 14.50 ft
Utility	1.93 x 1.64 m	6.33 x 5.38 ft
WC	1.70 x 1.64 m	5.58 x 5.38 ft



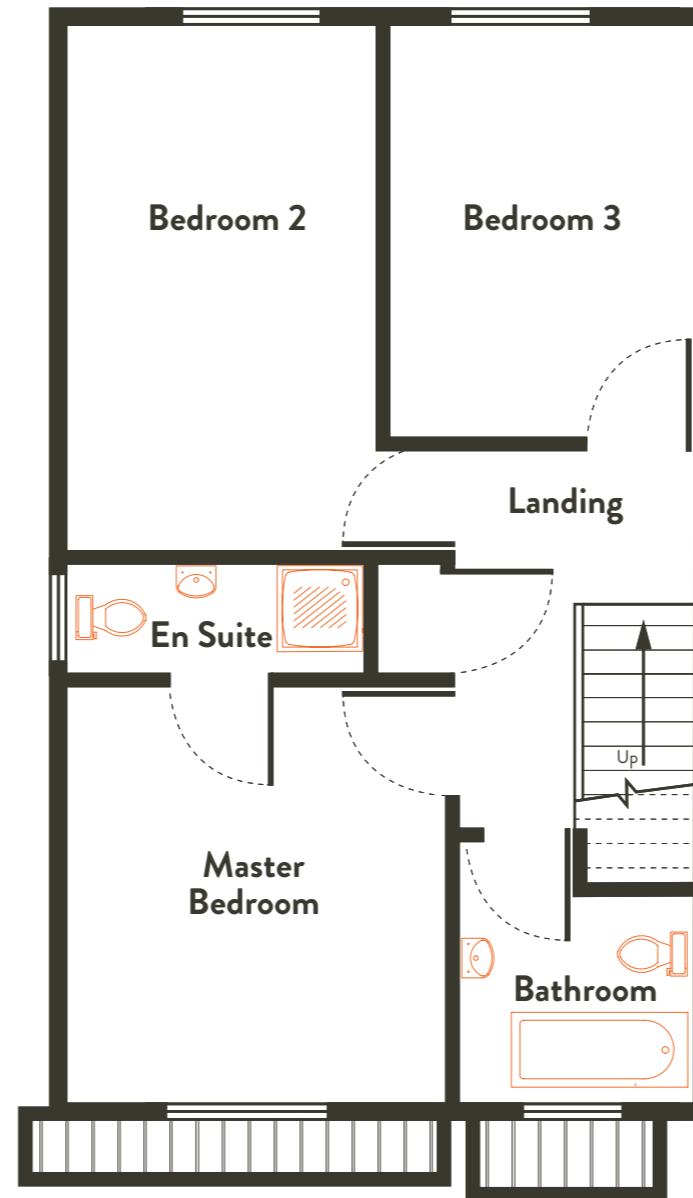
For more information  
contact Selling Agents:  
T: + 353 (0) 21 427 4323,  
E: [info@bartherswood.com](mailto:info@bartherswood.com)  
W: [www.bartherswood.com](http://www.bartherswood.com)



## House Type C1

### 3 Bed Semi-Detached Left Hand - First Floor

Overall 117.6 sq.m - 1266 sq.ft approx.



#### First Floor Plan

Room	Measurements (approx)	
	Metric	Imperial
Bathroom	2.20 x 2.35 m	7.23 x 7.71 ft
Bed 2	2.80 x 4.92 m	9.19 x 16.14 ft
Bed 3	2.90 x 3.77 m	9.51 x 12.37 ft
Master Bedroom	3.50 x 3.85 m	11.48 x 12.63 ft



For more information  
contact Selling Agents:  
T: + 353 (0) 21 427 4323,  
E: [info@bartherswood.com](mailto:info@bartherswood.com)  
W: [www.bartherswood.com](http://www.bartherswood.com)