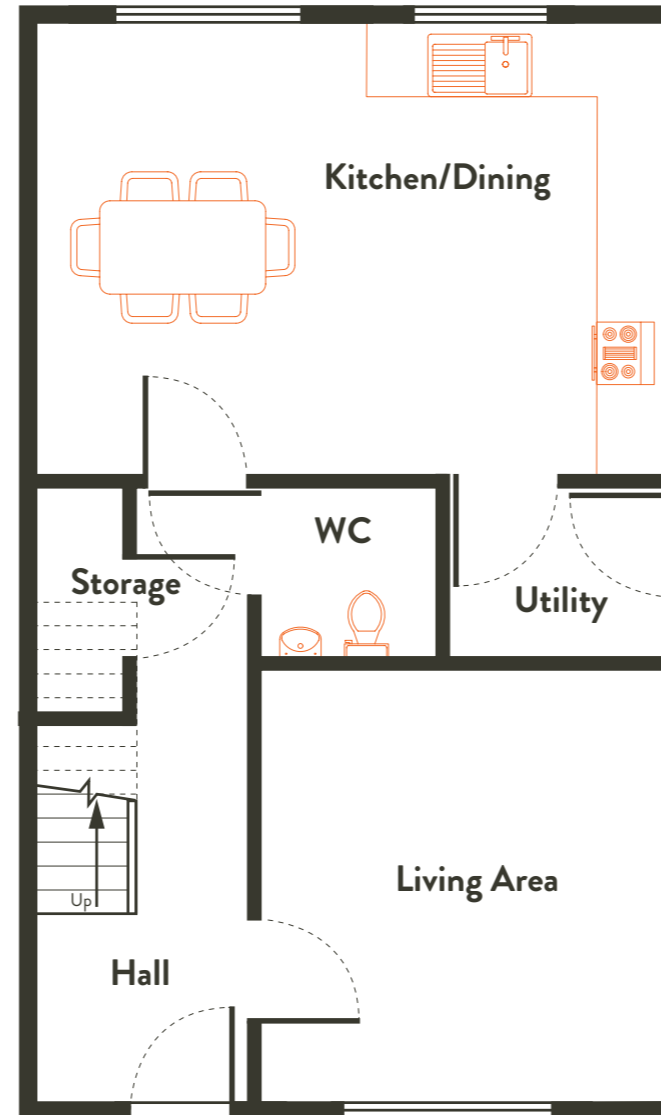




House Type C2

3 Bed Semi-Detached Right Hand - Ground Floor

Overall 116.2 sq.m - 1251 sq.ft approx.



Ground Floor Plan		
Room	Measurements (approx)	
	Metric	Imperial
Kitchen / Dining	5.80 x 4.21 m	19.03 x 13.81 ft
Living Area	3.73 x 3.97 m	12.24 x 13.02 ft
Utility	1.93 x 1.64 m	6.33 x 5.38 ft
WC	1.70 x 1.64 m	5.58 x 5.38 ft



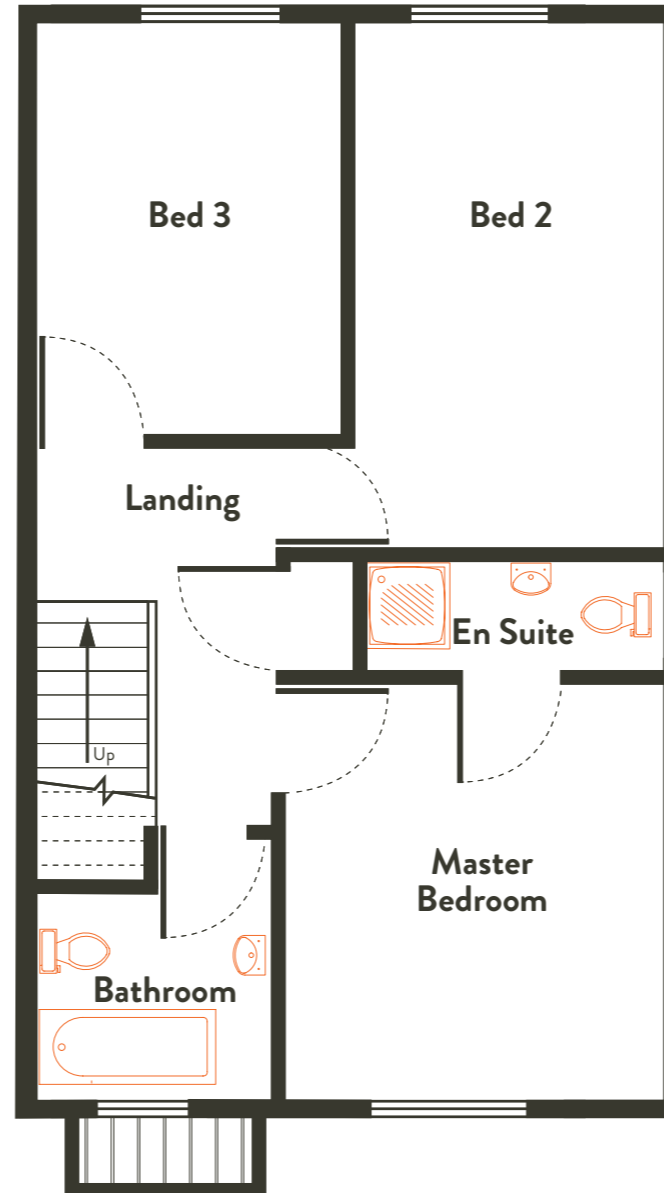
For more information
contact Selling Agents:
T: + 353 (0) 21 427 4323,
E: info@bartherswood.com
W: www.bartherswood.com



House Type C2

3 Bed Semi-Detached Right Hand - First Floor

Overall 116.2 sq.m - 1251 sq.ft approx.



First Floor Plan		
Room	Measurements (approx)	
	Metric	Imperial
Bathroom	2.20 x 2.35 m	7.23 x 7.71 ft
Bed 2	2.80 x 4.92 m	9.19 x 16.14 ft
Bed 3	2.90 x 3.77 m	9.51 x 12.37 ft
Master Bedroom	3.50 x 3.85 m	11.48 x 12.63 ft



For more information
contact Selling Agents:
T: + 353 (0) 21 427 4323,
E: info@bartherswood.com
W: www.bartherswood.com