



House Type A3

is the anticipated Show House and the only one of its kind in Barter's Wood.

It is a mirror image of House Type A2 detailed here: overall 172.5 sq.m - 1857 sq.ft approx.



For more information contact Selling Agents:
T: + 353 (0) 21 427 4323,
E: info@barterswood.com
W: www.barterswood.com

Ground Floor Plan		
Room	Measurements (approx)	
	Metric	Imperial
Dining Area	3.58 x 4.20 m	11.75 x 13.78 ft
Kitchen & Living Area	9.10 x 3.47 m	29.86 x 11.38 ft
Sitting Room	3.58 x 5.85 m	11.75 x 19.19 ft
Study	2.60 x 3.44 m	8.53 x 11.29 ft
Utility	2.00 x 1.69 m	6.56 x 5.54 ft
WC	1.50 x 1.69 m	4.92 x 5.54 ft





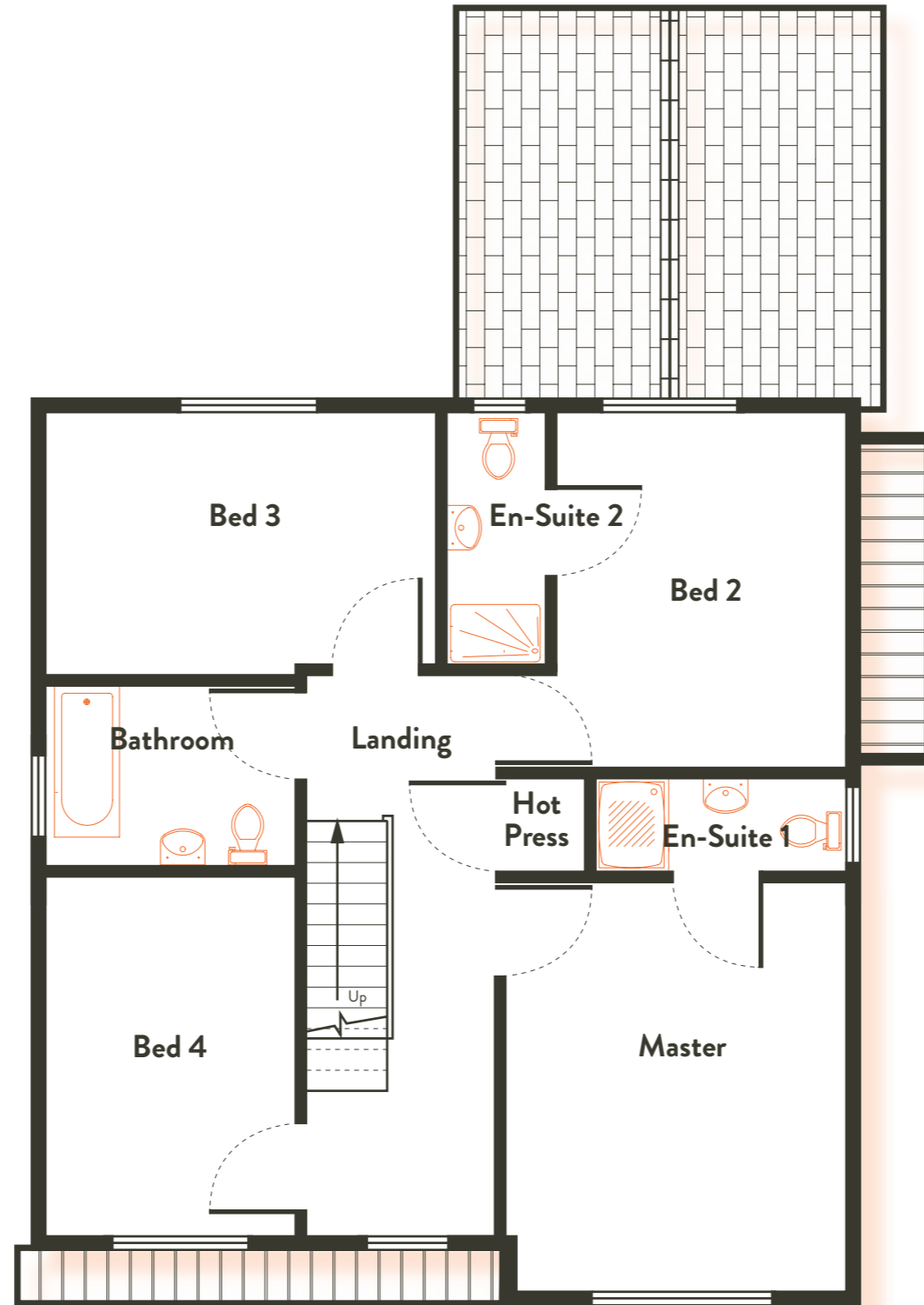
House Type A3

is the anticipated Show House and the only one of its kind in Barter's Wood.

It is a mirror image of House Type A2 detailed here: overall 172.5 sq.m - 1857 sq.ft approx.



For more information contact Selling Agents:
T: + 353 (0) 21 427 4323,
E: info@barterswood.com
W: www.barterswood.com



First Floor Plan		
Room	Measurements (approx)	
	Metric	Imperial
Bathroom	2.60 x 2.00 m	8.53 x 6.56 ft
Bed 2	3.05 x 3.77 m	10.01 x 12.37 ft
Bed 3	4.15 x 2.80 m	13.62 x 9.19 ft
Bed 4	2.60 x 3.80 m	8.53 x 12.47 ft
En-Suite 1	2.60 x 1.05 m	8.53 x 3.44 ft
En-Suite 2	1.10 x 2.68 m	3.61 x 8.79 ft
Master	3.60 x 4.36 m	11.81 x 14.30 ft